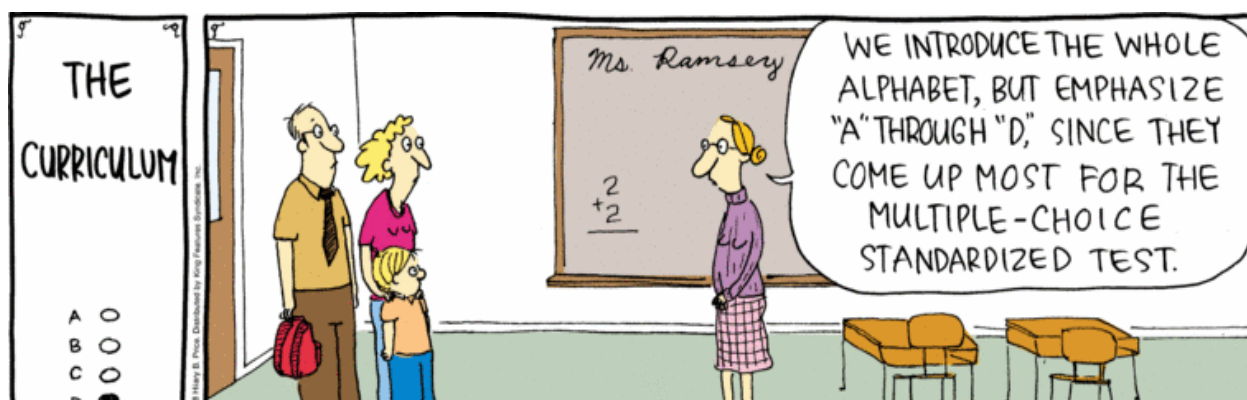


# Placements — IN EDUCATION —



## High School Teaching & Training Vacancies November, 2023



### How to use this Bulletin

**Each vacancy requires specific qualifications and experience.** Only apply for a vacancy if you have the qualifications and experience required. Advertisers are not bound to respond to CVs that do not meet the criteria set out in the advert!

**SA Citizens and SA Permanent Residents only.** We regret, we are not able to assist those with refugee status or work visas at present.

**Schools require all staff to have Police Clearance, and Teachers must have SACE registration.** If you don't have these yet, please obtain them before you apply. You cannot be legally employed without them. If you do have them, the SACE registration number and the date of your latest Police Clearance *must appear on the CV*. If they do not – we assume you do not have them.

**To send your CV,** please use the email address at the foot of the page.

**CLOSING DATE FOR ALL VACANCIES IN THIS BULLETIN:** FRIDAY 1 DEC @ NOON

**WHAT TO SEND:** A FULL COPY OF YOUR CV, INCLUDING SACE REG. NO, DATE OF POLICE CLEARANCE AND AT LEAST TWO REFREES WITH LANDLINE PHONE NUMBERS AT WORK SO WE CAN SPEAK TO THEM.

**EMAIL:** [ALISONP@STAFFROOM.CO.ZA](mailto:ALISONP@STAFFROOM.CO.ZA)

**WHATSAPP** 082 441 8165

**Your CV should be a fully editable Word or PDF file.** No scans. No CVs in CAPs. Make sure your CV has been proofread for mistakes before you send it! If you are employed, state the notice you need to give! Again – if you disregard these instructions we are not obliged to respond to your CV.

**Every CV requires at least two referees** who must be recent past or current employers, their name, designation, capacity in which they supervised your work, and day-time landline phone number at work - no cellphones, please.

<b>Index</b>	
HOD Vacancies	1-2
English and Afrikaans	3-5
Maths, Maths Lit, NS, Physical Science and Life Sciences	6-8
History & Geography	9
Technology, coding, IT and CAT	10
Art for Cambridge School in Myanmar from Jan 2024	12

#### **FAQs:**

#### **Question: What’s the difference between an Independent and a Private School?**

Answer: Strictly speaking, **an Independent School** is a non-profit institution. Any financial surplus at the end of the year will be ploughed back into the running of the school. Some family-owned schools operate in this way – or very nearly so.

**A Private School** is established in order to make a profit. A Listed company will pay that profit to the shareholders, a Pty Company would divide the profit among the owners.

## **English and Afrikaans Vacancies**

<b>Type of School &amp; Location</b>	<b>Grades &amp; Curriculum</b>	<b>Salary</b>	<b>Notes</b>
Independent, Parktown Jhb	7-9 English, Remedial, CAPS	R25kpm upwards	Intersen experience preferred, emphasis on reading and language use
Independent Honeydew, Jhb N West	7-9, English Remedial CAPS	R26kpm upwards	Intersen or Senior phase experience preferred, must be an English specialist
Independent,	8-12 English	R27kpm	Matric experience essential, very

**CLOSING DATE FOR ALL VACANCIES IN THIS BULLETIN: FRIDAY 1 DEC @ NOON**

**WHAT TO SEND: A FULL COPY OF YOUR CV, INCLUDING SACE REG. NO, DATE OF POLCE CLEARANCE AND AT LEAST TWO REFREES WITH LANDLINE PHONE NUMBERS AT WORK SO WE CAN SPEAK TO THEM.**

**EMAIL: [ALISONP@STAFFROOM.CO.ZA](mailto:ALISONP@STAFFROOM.CO.ZA)**

**WHATSAPP 082 441 8165**

Orange Farm	HL pref with History 10-12 mainstream CAPS	upwards	safe access to school, secure campus with good facilities & management, low fee school with good results
Independent Fairland NW Jhb	8-12 Afrik FAL IEB, v small classes	R30kpm upwards	Matric experience essential, tiny classes, good results, small school gr 0-12

## Core Maths and Maths Literacy

Type of School & Location	Grades & Curriculum	Salary	Notes
Private, Witbank (Mpumalanga)	7-9 Core Maths IEB	R26kpm upwards	Small school, small classes, good results
Private, Ruimsig (West Rand)	7-9 Core Maths & EMS, IEB	R26 upwards	Small school country atmosphere, small classes
Independent, Highlands	Part time Core Maths gr 10-12 IEB	Hourly rate to be negotiated	Jewish religious school, very small classes, bright but bouncy learners
Independent, Jewish School Orange Grove, Jhb E	8-12 Core Maths & ? CAT	R30 kpm	Jewish Religious school, small classes, bright but bouncey learners
Private, Krugersdorp W Rand	Maths & Stats gr 8-IGCSE & A Level	R30kpm upwards	Small classes, academically rigorous B degree with maths & stats 2 minimum + teaching experience

## Physical Science, Life Science and NS

Type of School & Location	Grades & Curriculum	Salary	Notes
Independent, Parktown	8-12 NS and Life Science CAPS Remedial	R26kpm upwards	Matric experience with LS essential, small classes, the school gets 100% pass on matric annually - dedicated teachers only!
Private, Soweto OR Benoni	8-12 NS & Life Science CAPS	R26kpm upwards	Well managed independent school on the edge of Soweto, safe, modern campus, well managed

**CLOSING DATE FOR ALL VACANCIES IN THIS BULLETIN: FRIDAY 1 DEC @ NOON**

**WHAT TO SEND: A FULL COPY OF YOUR CV, INCLUDING SACE REG. NO, DATE OF POLCE CLEARANCE AND AT LEAST TWO REFRES WITH LANDLINE PHONE NUMBERS AT WORK SO WE CAN SPEAK TO THEM.**

**EMAIL: [ALISONP@STAFFROOM.CO.ZA](mailto:ALISONP@STAFFROOM.CO.ZA)**

**WHATSAPP 082 441 8165**

## Humanities: History, Geography, Tourism

Type of School & Location	Grades & Curriculum	Salary	Notes
GDE, excellent reputation, Eastgate	Gr 10-12 Tourism CAPS	GDE Scales & Benefits	Top High School with reasonable sized classes and good results. Excellent management
Independent, Jewish School Orange Grove	History 10-12 IEB	R28kpm upwards	Jewish school which takes history very seriously! Great place for a specialist history teacher
Independent, family owned, Florida (W Rand)	Geography 10-12, LS 10-11 IEB	R28kpm upwards	Experience with gr 12 Geography essential. Small school, reasonable sized classes, few extramurals

## Commercial

Type of School & Location	Grades & Curriculum	Salary	Notes
Independent Jewish School, Orange Grove,	10-12 Bus Studies, with some EMS, IEB	R28kpm upwards	Matric experience essential; small classes, this is a big subject for this school, enthusiastic business teacher required
Independent, Fairlands (NW Jhb) family owned	10-12 Accounts, 10-11 Business Studies, IEB	R30kpm neg	Matric experience with Accounts essential, business studies up to gr 11. Small classes, small school, family atmosphere.
Private School, Ruimsig area (W Rand)	10-12 Accounts with some gr 8-9 classes IEB	R28kpm neg	Matric experience with Accounts essential, some EMS at lower grades, small classes, country atmosphere

## Vocational Subjects

Type of School & Location	Grades & Curriculum	Salary	Notes
GDE Eastgate	10-12 Consumer Studies CAPS	GDE Scales and benefits	Experience with gr 12 Consumer studies essential; well managed GDE high school with a top reputation
GDE, E Rand, remedial school	8-12 Engineering Graphic Design	GDE Scales and benefit	Must be fully qualified for EGD, matric experience a recommendation but not essential;

**CLOSING DATE FOR ALL VACANCIES IN THIS BULLETIN: FRIDAY 1 DEC @ NOON**

**WHAT TO SEND: A FULL COPY OF YOUR CV, INCLUDING SACE REG. NO, DATE OF POLCE CLEARANCE AND AT LEAST TWO REFRES WITH LANDLINE PHONE NUMBERS AT WORK SO WE CAN SPEAK TO THEM.**

**EMAIL: [ALISONP@STAFFROOM.CO.ZA](mailto:ALISONP@STAFFROOM.CO.ZA)**

**WHATSAPP 082 441 8165**

## Overseas

Type of School & Location	Grades & Curriculum	Salary	Notes
Independent, Cambridge, Yangon, Myanmar	7-IGCSE Cambridge Art and Design	US\$2700 + benefits & airfares	Experience up to matric Art required, Cambridge experience a recommendation but not essential, January start
Private, Auzie Curriculum, Malaysia	Gr 7-IGCSE English + A Level English	US\$2500 + benefits & airfares	BA Grad with English major, experience with Cambridge a recommendation, must have Matric experience in SA. Lovely school with Auzie links

**\_\_\_\_\_ THAT's the LOT! \_\_\_\_\_**

**CLOSING DATE FOR ALL VACANCIES IN THIS BULLETIN: FRIDAY 1 DEC @ NOON**

**WHAT TO SEND: A FULL COPY OF YOUR CV, INCLUDING SACE REG. NO, DATE OF POLCE CLEARANCE AND AT LEAST TWO REFRES WITH LANDLINE PHONE NUMBERS AT WORK SO WE CAN SPEAK TO THEM.**

**EMAIL: [ALISONP@STAFFROOM.CO.ZA](mailto:ALISONP@STAFFROOM.CO.ZA)**

**WHATSAPP 082 441 8165**